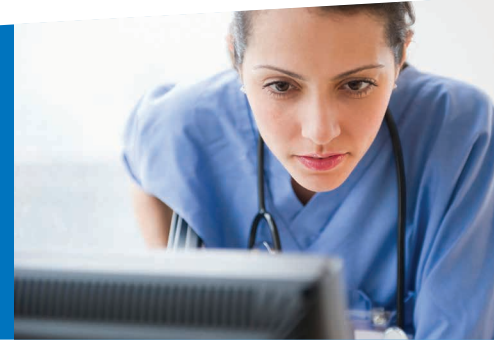


Exchange Services for Health Plans



Easily Meet Compliance Requirements and Proactively Manage Risks

For Every Requirement, Turn to Truven Health

- Data for EDGE Server requirements
- Reinsurance and risk adjustment compliance
- Initial validation audit of EDGE claims
- Cost-sharing calculations and reconciliations
- CMS audit requests

Risk optimization, EDGE Server data submissions, cost-sharing reduction reconciliations, the initial validation audit — for plans participating in exchanges, the moving parts associated with Affordable Care Act (ACA) are complicated, and the compliance process is lengthy.

It can be difficult to know what to do first or where to go for help. Fortunately, Truven Health Analytics™ can help you meet even the most complex and changing regulatory demands and stay on top of risk management. We're currently partnering with nearly 20 health plans on exchange services, hosting more than 18 EDGE servers, and processing records for more than one million members.

EDGE Services

We provide the expertise you need to ensure clean data submission to your EDGE Server, plus the ongoing oversight necessary for continued confidence, through:

- Collecting and formatting required data
- Loading data to EDGE Servers
- Responding to HHS inquiries and resolving any issues
- Reporting on results

Risk Score Optimization (RSO)

We'll help you mitigate financial risk and understand the drivers to "break even" in the Department of Health and Human Services (HHS) calculations. Our services combine expert knowledge and analytic power with an advanced set of actuarial and predictive models and include:

- Predicting areas for RSO with clinical data from your providers
- Identifying individuals whose conditions may not be completely reflected in claims data
- Developing a list of physicians with coding opportunities

Our monthly financial management and actuarial reports help you proactively monitor your risk. That means you can immediately develop strategies to control loss ratios and move forward with programs for managing illness and educating members.

EDGE Compliance Validation

To ensure you move through compliance and on to payment recovery quickly, Truven Health — along with our partner, Wakely Consulting Group, Inc. — offers complete EDGE compliance validation services, including in-depth claims auditing.

Cost-Sharing Reconciliation (CSR)

By pairing our industry experience and robust claims data analysis capabilities with actuarial forecasting, we help you optimize the reconciliation process, whether you choose the standard or simplified method. Our CSR solution:

- Leverages our 100%-of-claims re-adjudication process
- Draws from the same analytic experience that's helping health plans comply with EDGE server regulations
- Meets the requirements of the standard method
- Unburdens your technology, actuarial, and financial staff
- Ensures compliance with evolving HHS regulations
- Makes sure your payments are correct

EDGE Initial Validation Audit (IVA)

With our IVA solution, you simply submit EDGE data files, medical records, and charts to us. Our certified coders handle the rest. As your partner, we'll:

- Validate your demographic data
- Re-run a risk adjustment model
- Answer your questions and provide instructions on what you need to submit
- Review your EDGE data files to ensure completeness and provide a data quality report
- Perform chart reviews to validate that your EDGE files align with medical records
- Deliver an audit report and support you in delivering the results to the Centers for Medicare & Medicaid Services (CMS)

We're Ready to Be a Part of Your Team

Truven Health has been helping health plans save money and improve care for more than 30 years. We deliver more than data; we deliver reliable answers.

More than anyone else, we're prepared to help you manage the complexities of reform and compliance — today and tomorrow.



Get Connected

Email healthplan@truvenhealth.com or visit truvenhealth.com

We provide the insights you need to succeed in the Exchange environment.



ABOUT TRUVEN HEALTH ANALYTICS

At Truven Health Analytics, we're dedicated to delivering the answers our clients need to improve healthcare quality and access, and reduce costs. Our unmatched data assets, technology, analytic expertise, and comprehensive perspective have served the healthcare industry for more than 30 years. Everyday our insights and solutions give hospitals and clinicians, employers and health plans, state and federal government, life sciences researchers, and policymakers the confidence they need to make the right decisions.

Truven Health Analytics owns some of the most trusted brands in healthcare, such as Micromedex, ActionOI, 100 Top Hospitals, MarketScan, and Advantage Suite. Truven Health has its principal offices in Ann Arbor, Mich.; Chicago; and Denver. For more information, please visit truvenhealth.com.

truvenhealth.com | 1.800.525.9083

©2015 Truven Health Analytics Inc. All rights reserved. All other product names used herein are trademarks of their respective owners. HP 15381 0315